



# Who are we?

The Guardians of Pāuatahanui Inlet

(GOPI) is a registered charity and aims to promote, protect, maintain, and foster the natural, historic and cultural values of the Pāuatahanui Inlet while supporting the implementation of the Harbour Accord, the Porirua Harbour Strategy and Action Plan.

# Who are we?

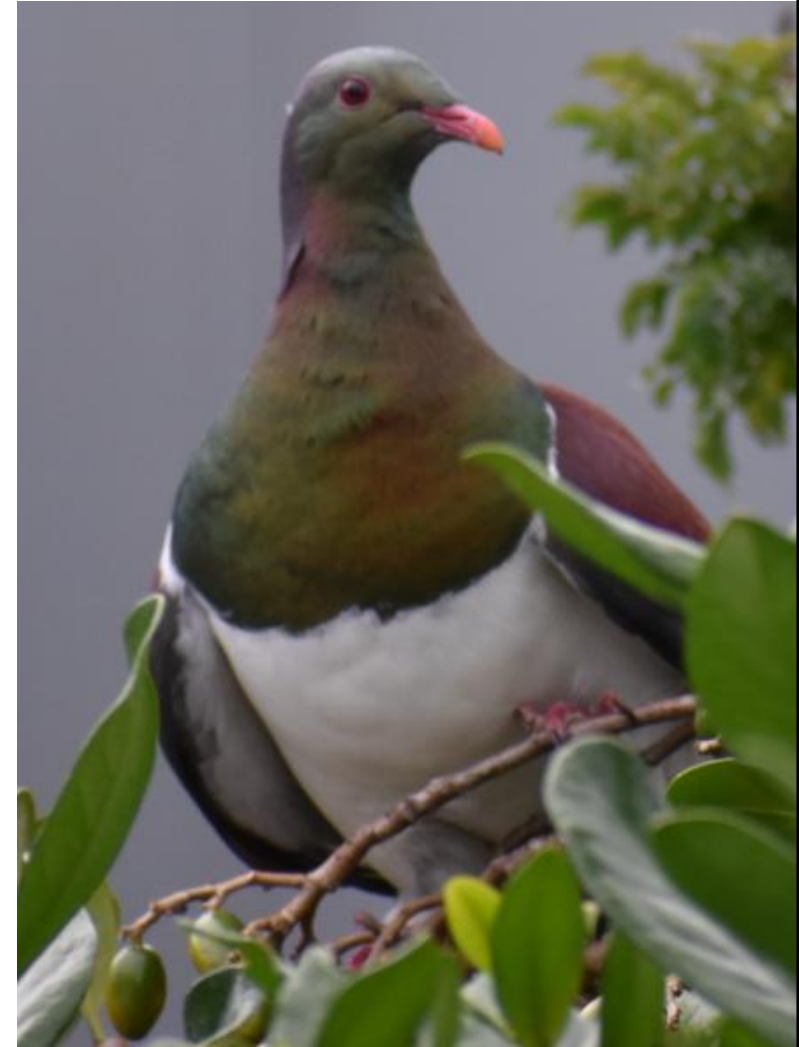
Established in 1991 in response to concerns about the inlet health:

- Silting – an ongoing issue
- Pollution – heavy metals, stormwater, sewerage overflows
- Development and modification – Whitby and other residential developments; Transmission Gully

# What do we do?

## 1. *Science in the inlet*

- Triennial cockle survey
- Access to technical information
- Support for scientific work
- Harbour report card



# What do we do?

2. *Revegetation projects*

3. *Inlet clean up*

4. *Publicising activities and information*

5. *Advice and submissions*

6. *Pest trapping*

7. *Photographic competitions*

# Our website

<https://gopi.org.nz>

- Activities and events
- Newsletters
- Submissions
- Reports
- Technical information



# Collaboration is crucial

Many partners/stakeholders involved in the inlet:

- Greater Wellington Regional Council
- Porirua City Council (PCC)
- Ngāti Toa
- Department of Conservation
- NZTA/Waka Kotahi
- Wellington Water
- NGOs – GOPI, Rotary, Porirua Harbour Trust, Forest and Bird, Residents' Associations etc.

The recently signed Harbour Accord is an important milestone.



# Te Wai Ora o Parirua – Porirua Harbour Accord





# The annual inlet clean up







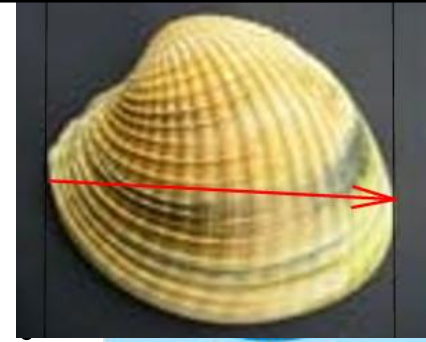
# Collaboration with GWRC

*Cockle count*

*Revegetation projects*

*Liaison and information sharing*

# The triennial cockle count



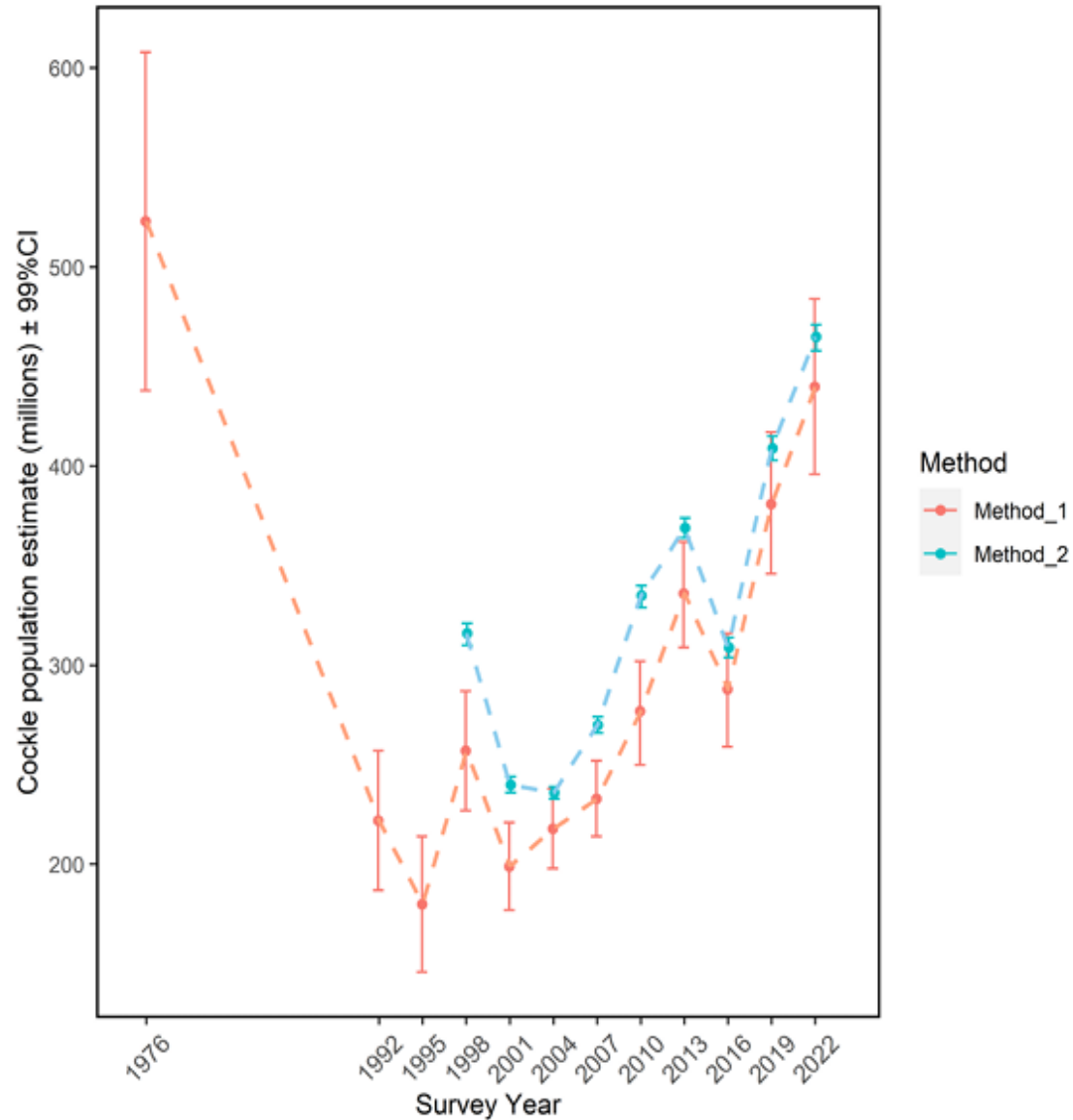
- New Zealand's longest running citizen science project
- Close collaboration with stakeholders
- Community involvement
- Value lies in data collected since 1992 as ONE indicator of inlet health



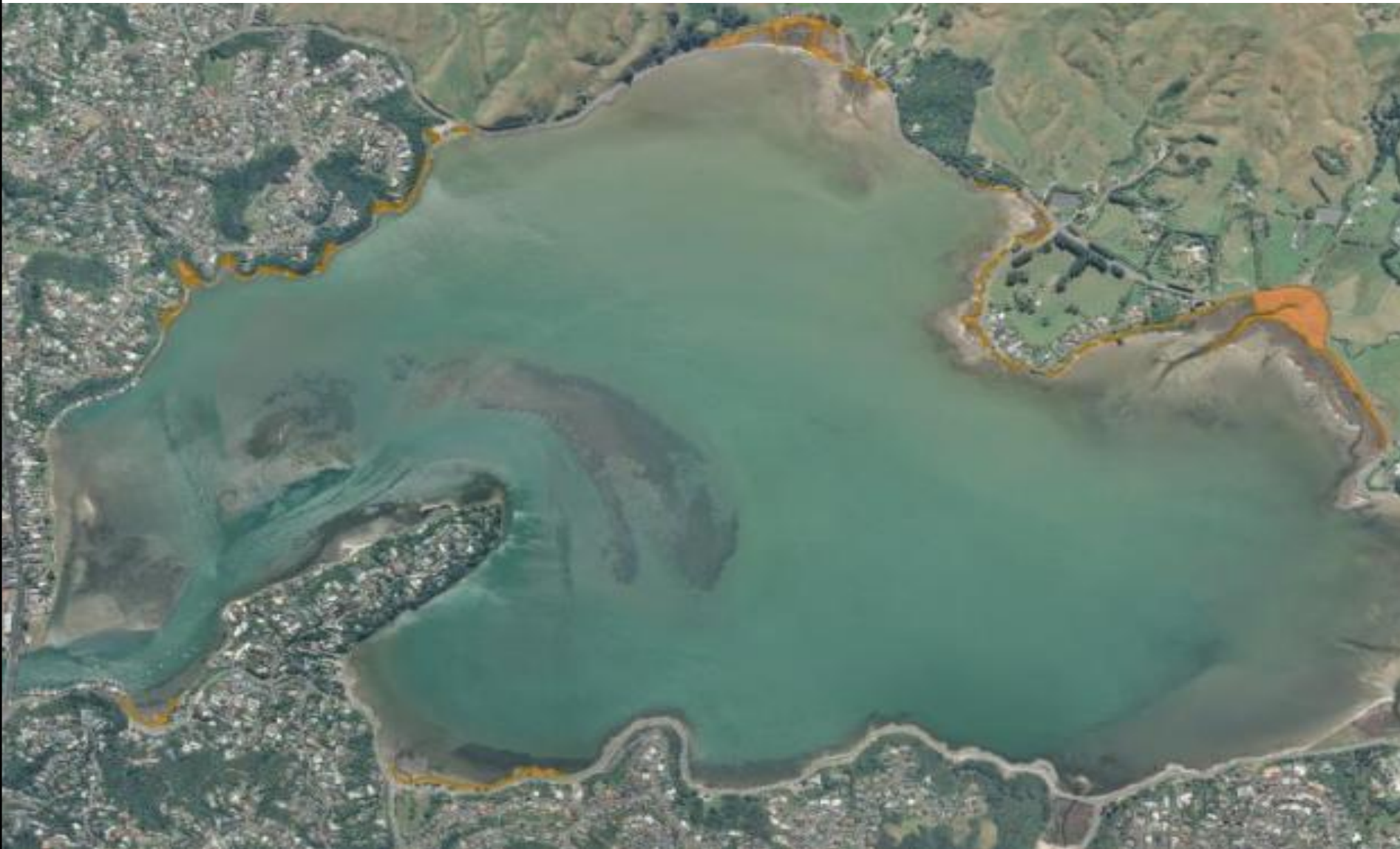




# Cockle count - results



# Revegetation projects





# Why rushes?

- Critical component of the inlet food chain
- Habitat for birds, crabs, invertebrates
- Help prevent coastal erosion
- Filter pollutants





# Browns Bay





# Motukaraka Point 2021





...and 2025





















# Ivey Bay 2021





.... and 2025



But also terrestrial planting  
with mākaka (saltmarsh  
ribbonwood) and harakeke....



Camborne Walkway 2021



.....and 2025







August 2024 planting  
Motukaraka



....and June 2025

















# The Ivey Bay revegetation project - courtesy of the GWRC Community Environment Fund









# Ongoing collaboration with GWRC



- Continued support for revegetation projects in collaboration with PCC, Ngāti Toa and others
- Continued support for the cockle count
- Information sharing
- Repository of all technical reports pertaining to the inlet
- Enforcement of speed limits for watercraft



# Acknowledgements

GWRC – and in particular Jo Fagan

PCC – Baillie Graham, Andrew Jenks and previously Nigel Clarke and Rachel McClennan

Ngāti Toa Rangatira

The GOPI Committee (and their partners) and GOPI members

All the volunteers who offer up their valuable time.

Conservation Volunteers

Forest and Bird

Our generous donors including the Department of Conservation, Nikau Foundation, Greater Wellington Regional Council, the Kirk-Burnnand family, Lighthouse Cinema Pāuatahanui and Paremata Auto Services.