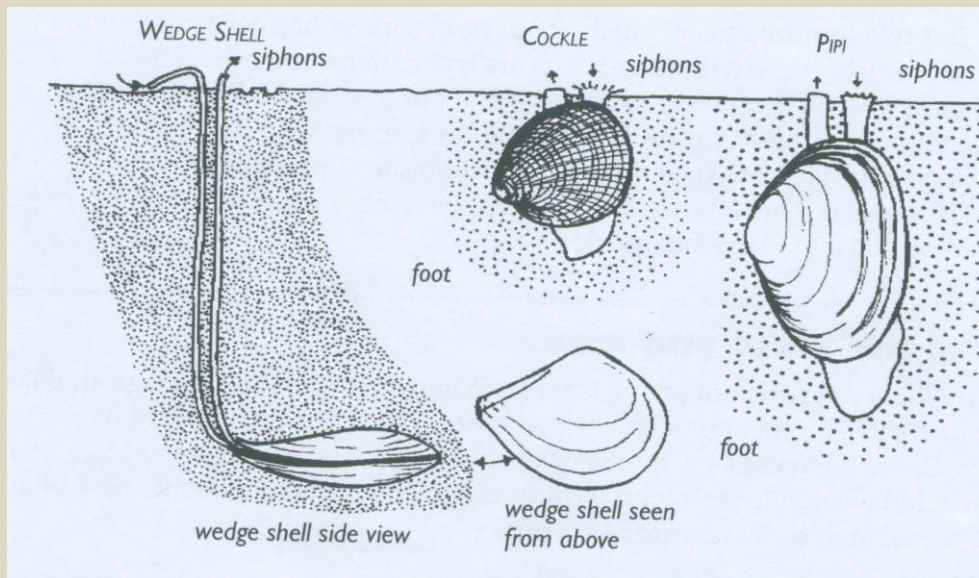


Something to do 8: comparing shellfish of the mudflats

At the estuary, you may find several different sorts of shellfish. Some of them will be bivalves. This means they have two shells, which are 'hinged' together. Cockles and wedge shells are bivalves. If you are on the sandy beach near Paremata bridge, you might see pipi, which are also bivalves. Look at the three shellfish below.



Answer the questions to show how these three animals are *alike* and *different*.

- | | |
|--|----|
| 1. What body parts do the cockle, the wedge shell and the pipi have in common? | 1. |
| 2. Where do the three shellfish usually live? | 2. |
| 3. How do they feed? | 3. |
| 4. What protects them while they are feeding? | 4. |
| 5. How deeply is each shellfish buried? | 5. |
| 6. Look at the shading around each animal. What does this shading tell you? | 6. |